

VII Sight Reading

A. Quarter Notes and Eighth Notes

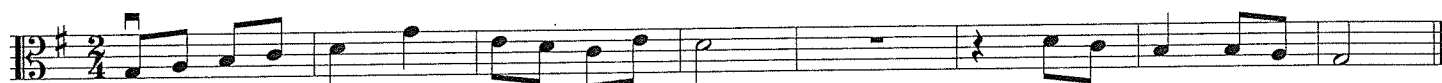
280.



281.



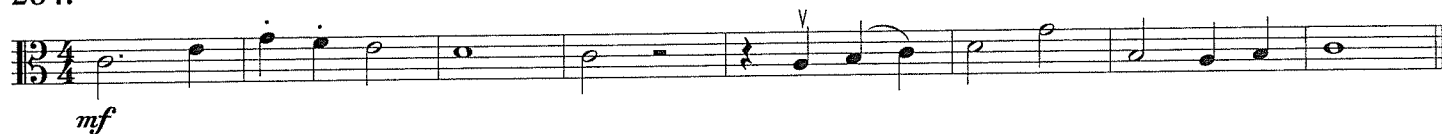
282.



283.



284.



285.



286. Duet

Musical notation for exercise 286 Duet: Treble clef, key signature of one sharp (F#), 4/4 time signature. Part A (top staff) consists of quarter notes: F4, G4, A4, B4, C5, B4, A4, G4, F4, E4, D4, C4. Part B (bottom staff) consists of quarter notes: F4, G4, A4, B4, C5, B4, A4, G4, F4, E4, D4, C4.

287. Duet

Musical notation for exercise 287 Duet: Treble clef, key signature of one sharp (F#), 3/4 time signature. Part A (top staff) consists of quarter notes: F4, G4, A4, B4, C5, B4, A4, G4, F4, E4, D4, C4. Part B (bottom staff) consists of quarter notes: F4, G4, A4, B4, C5, B4, A4, G4, F4, E4, D4, C4.

D. Dotted Quarter Notes

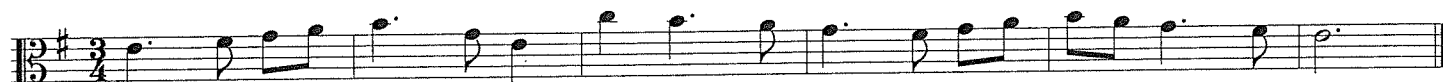
304.



305. Canon in 2 Parts



306.



307.



308.



309. Duet

Musical notation for exercise 309, titled "Duet". It consists of two staves in 3/4 time, starting with a treble clef and a key signature of one sharp (F#). The top staff is labeled "Part A" and the bottom staff is labeled "Part B". Both parts feature dotted quarter notes and eighth notes.

310. Round in 3 Parts

W. A. Mozart



G. Sixteenth Notes in Simple Meters

326.



327.



328.



329.



330.



331.



332.



333.



334. Duet

Part A

Part B